

# **Our Design Templates. A Users Guide.**

This is a basic guide to using our design templates. More information about fonts, images and our other specifications can be found in our FAQ document.

# About our templates:

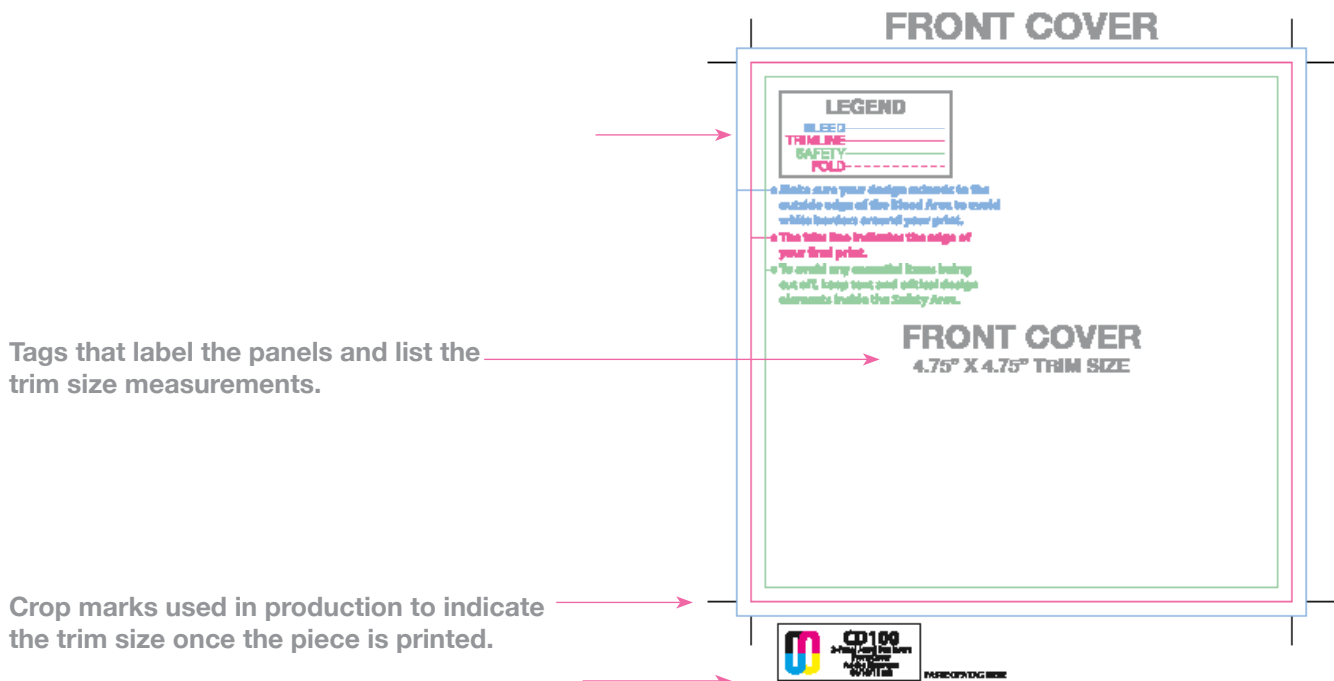
We have templates available in all professional-level desktop publishing software. Here is a list of file formats we can accept:

Layout files:

- Adobe Illustrator
- Adobe InDesign
- Adobe Photoshop

For each application our templates are saved in the oldest version we accept. We do this to make them accessible to the widest number of users.

Please save all your files in the version of the software you are using. **DO NOT** save back to an older version as this may cause problems with your files. Some applications default to save in the version used to create the template and you will have to use the Save As function to save in a newer version.



Tags that label the panels and list the trim size measurements.

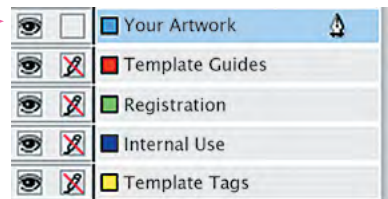
Crop marks used in production to indicate the trim size once the piece is printed.

An information slug showing the template name and description. The slug also includes job tracking information.

This section is for production use only and does not need to be filled in.

Our templates are set up with 5 layers.

- Your Artwork
- Template Guides
- Registration (crop marks)
- Internal Use
- Template Tags



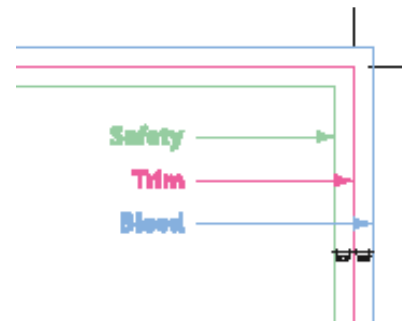
## Setting up your design:

Use the layer called Your Artwork.

The layer called Your Artwork is intended for you to use for your layout. You may make additional layers to use for your design. Please don't place any of your design on the Template Guides, Registration, Internal Use or Template Tags layers. You may move the Template Guides layer to the top if you want to be able to see the guides on top of your design (the guides are set to non-printing and will not print on your final output).

## Using the guides:

The pink guides show where the package will be trimmed to final size. The light blue guides show 1/8" of bleed where needed. The green guides show the type safe area. Any text or other elements that can not be trimmed must be within the safety guides.



It's important to include bleed. Printed pieces are cut to size in stacks and do not get cut exactly on the trim lines. Bleed is background image extending beyond the trim line to be cut off. This prevents any blank paper from showing along the cut edges. The same applies to the type safe margins. Any text inside the safety guide will not be cut if the print is cut slightly inside the trim lines.

Illustration A shows an example of a single page with the background image extending to the bleed and the type within the safety margins.

Illustration B shows the same layout after it has been trimmed to size.

Illustration A



Illustration B



# Disc tray placement:

Our templates use guides to indicate the placement of the plastic tray that will hold the disc(s). Although these template guides are accurate, variations during manufacturing mean the final artwork may shift slightly in regard to the actual tray. While the shift is minimal, it means an exact alignment between the printing on the packaging and disc will not be possible.

Illustrations A1 and A2 show examples of templates with the tray guide overlaid on the design. Illustration B1 and B2 show the same layouts with the discs in place.

The Digipak illustrations are oriented upside down to match the orientation of most Digipak templates.

Illustration A1  
INSIDE TRAYCARD

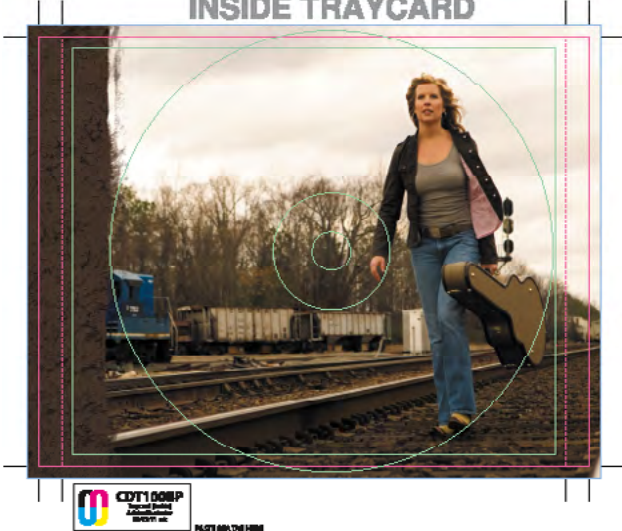


Illustration A2  
Digipak

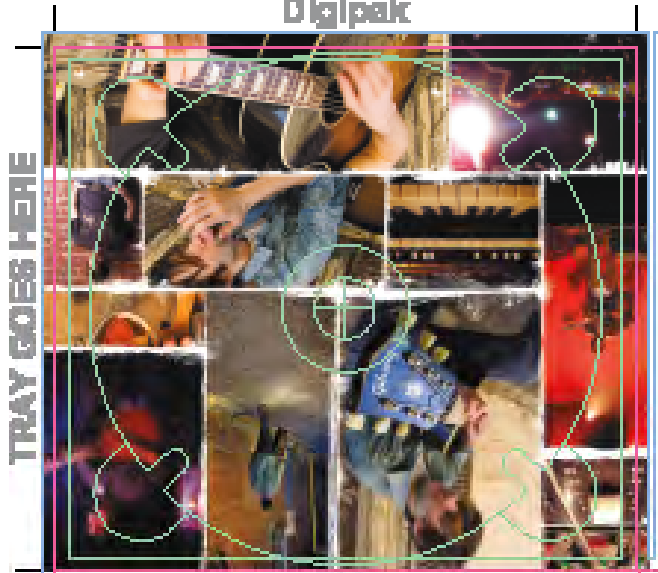


Illustration B1  
INSIDE TRAYCARD

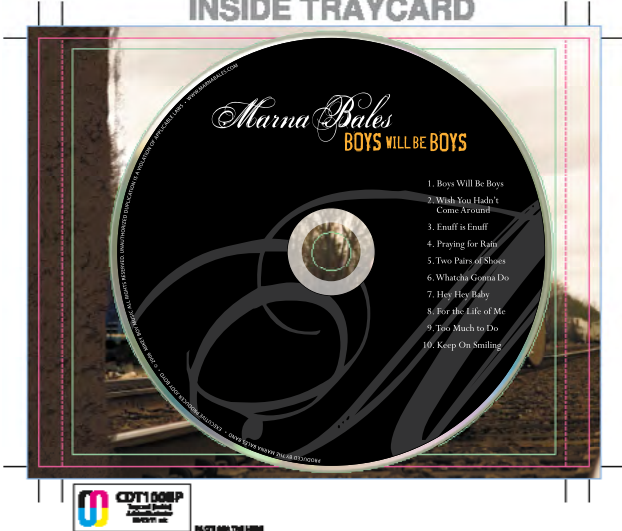


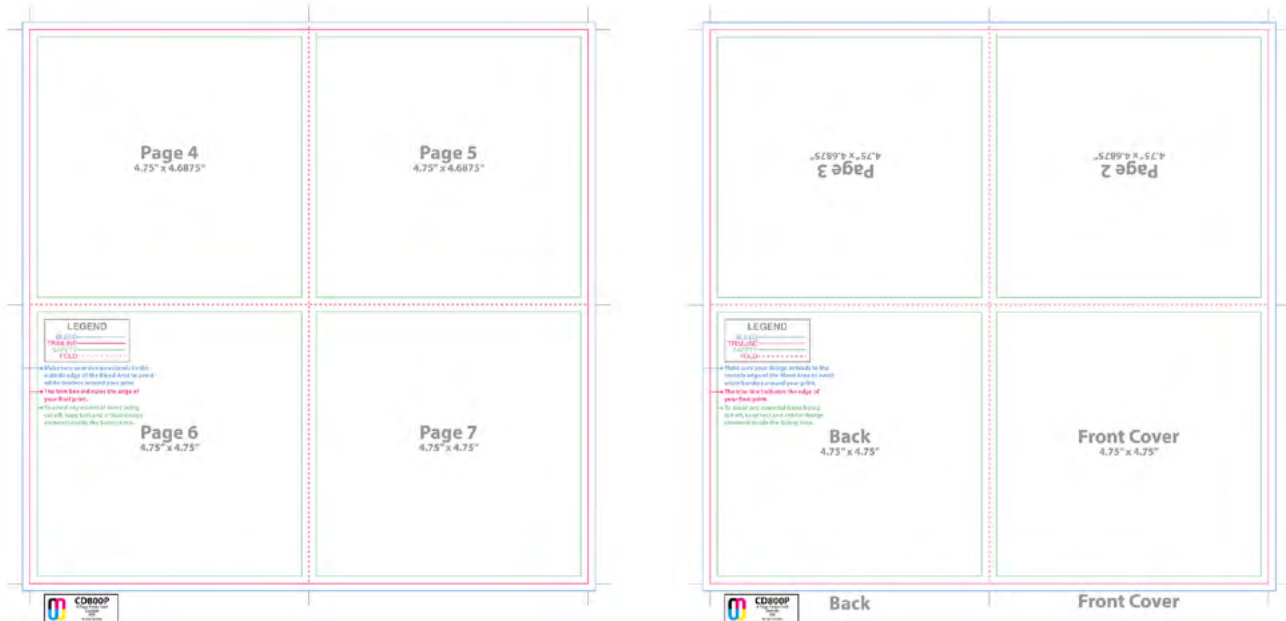
Illustration B2  
Digipak



## Paginating stapled booklets:

Our booklet templates are arranged in reader's spreads. Each page of the document has 2 booklet pages side by side. The page numbers are marked in the templates and should not be rearranged.

This illustration shows the 4 spreads that make up an 8 page booklet with the pages numbered.



## On disc printing templates:

Because the disc label is printed directly on to the disc surface and does not get trimmed the art does not need bleed or safety margins.

The on disc templates show guides for the physical edge of the disc, the live print area and when applicable a guide where the mirror band begins.

Unlike white paper, a disc has three distinctly different surfaces.

- The regular surface of the disc is silver (or reflective aluminum, technically). Depending on the lighting and angle at which you hold the disc, the surface appears to have a tonal value of about 15 percent black.
- The mirror band. This is a highly reflective ring just outside the clear center of the disc that contains information about the disc itself; track information, artist, job number, etc.
- The stacking ring is a lip in the clear plastic center of the disc, between the mirror band and the hole.

# On disc printing continued:

Illustrated below are the 2 stages of your disc design.

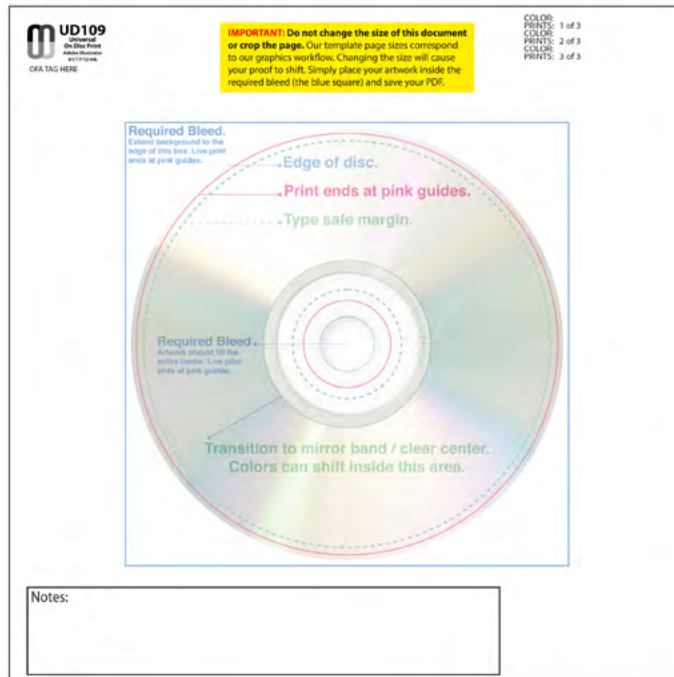


Illustration A

- Illustration A shows a blank disc with the template guides overlaid on it.

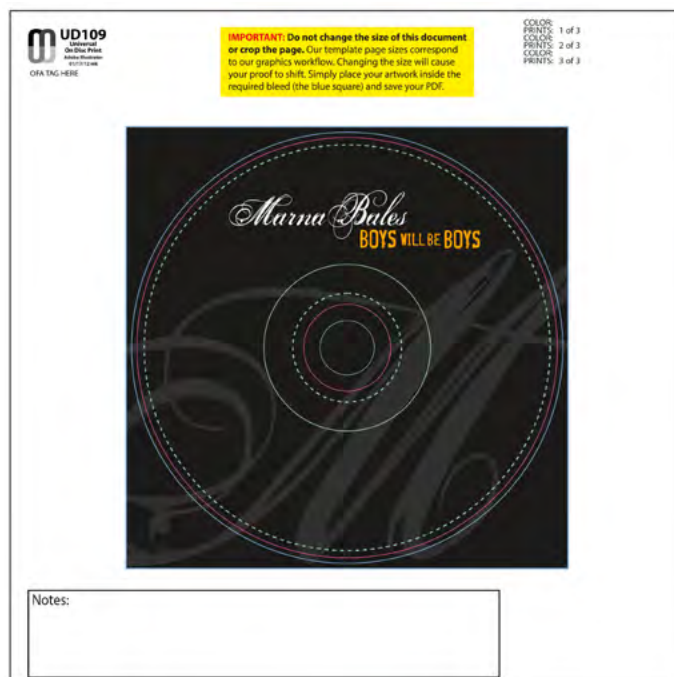


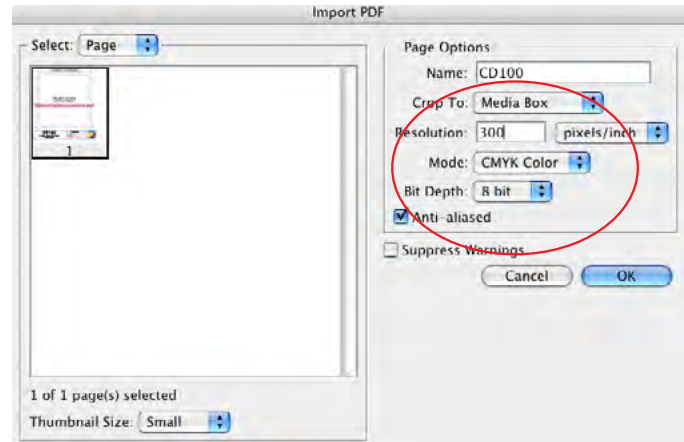
Illustration B

- Illustration B shows how your art should look in template when you send it to us. Please note that the art fills the required bleed from the box edge to the center. The guide lines are shown for illustration purposes

## Using our templates with Photoshop:

Please submit Photoshop files in their layered format along with all fonts used. This will give us the most options for making any needed adjustments and when possible will help preserve the vector objects and text. Keep in mind that not all vector objects can be preserved and some or all of your Photoshop files can be rasterized before output.

To use a template in Photoshop open the PDF version of the template using Photoshop. The rasterize generic PDF dialog will open. Set Crop to Media Box, Resolution to 300 pixels / inch, Mode to CMYK Color and Bit Depth to 8 bit. The template will open on its own layer with a transparent background. Create additional layers as needed for your design.



## Saving your files:

**SAVE YOUR FILES IN THE VERSION YOU ARE USING! DO NOT SAVE BACK TO AN OLDER VERSION!**

Please save all your files in the version of the software you are using. **DO NOT** save back to an older version as this may cause problems with your files. Some applications default to save in the version used to create the template and you will have to use the Save As function to save in a newer version.

We recommended that you name your files with a unique name preferably using your customer number in the name. We receive a large number of files every day. Files with names like CD Cover.qxd are more likely to be confused with other files. A file with a name like CT00123456 Booklet.ai is going to be easy to keep track of. Please use file name extensions in the name (this includes Mac users too). It makes it easier for us to be sure what application was used.